

# FIBRE OPTIC PATCH CORDS

Fibre Systems manufactures and supplies fibre optic leads and assemblies using high-grade components, as well as advanced testing and inspection and equipment.

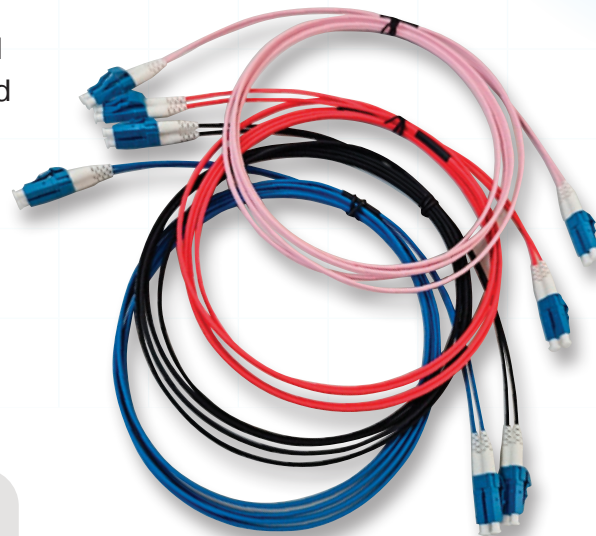
All Fibre Systems patch leads are tested at the factory and come with a 25-year guarantee. These patch leads are generally LSZH and offered in various connector formats and lengths for all modes. The maximum specified insertion loss (IL) is 0.15db. For custom cable configurations, connector types, or mode requirements, contact Fibre Systems. The product range includes armoured patch leads, Flexi-Boot, reduced diameter cables, and other specialised options.

## FEATURES

- Resilient and flexible
- LSZH Jacket as stock standard
- Factory-terminated and tested
- Standards based testing provides traceable and repeatable results
- Ultra high performance zirconia ferrules
- Factory terminated under ISO 9001 quality control procedures
- Interferometer testing for endface geometry
- Individually bagged and labelled
- Broad stock holding range
- Specialists in harsh environment/hybrid terminations
- RoHS Compliant
- 25 Year Warranty

## APPLICATION

- Suitable for general indoor use, such as routing connections and patching systems
- Data centre equipment, cross connect and lead-ins
- Termination enclosure to equipment patching



LC UNIBOOT



STANDARD

## FIBRE OPTIC PATCH CORDS

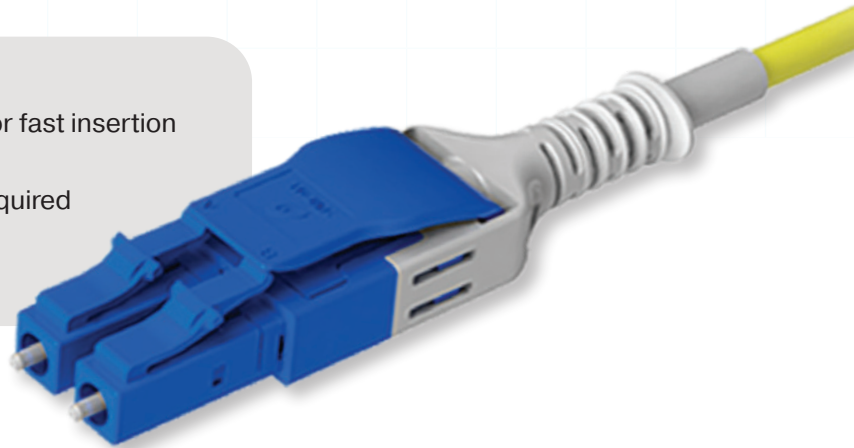
# LC UNIBOOT

The new LC Pull Uniboot patch cord design incorporates a reinforced boot for a quick push-pull insertion and removal of the connector (no tabs needed). This new design helps conserve precious space in high-density panels and the colour options assist with organisation. Three cable sizes are available: 1.6mm, 2.0mm and 3.0mm.

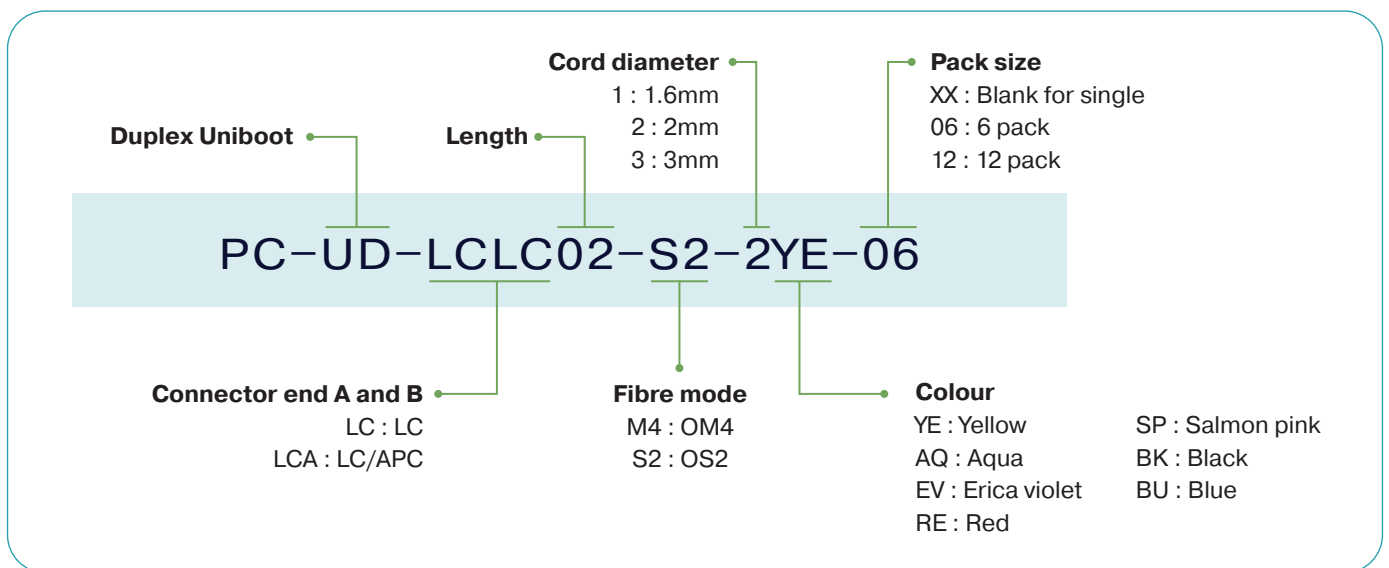


### FEATURES

- “Just Grab It by the Boot” – a reinforced boot for fast insertion and removal
- Polarity change within boot, no tools or tabs required
- Designed specifically for HD packaging
- Bulk Packaging options available



### Ordering Information



## FIBRE OPTIC PATCH CORDS

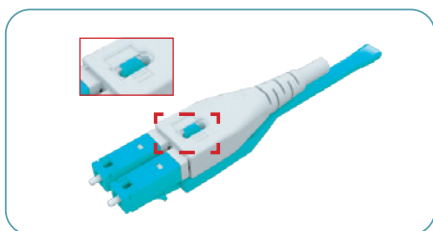
# LC HIGH DENSITY SWITCHABLE POLARITY PATCH CORD

Quicker and easier extraction for HD packaging

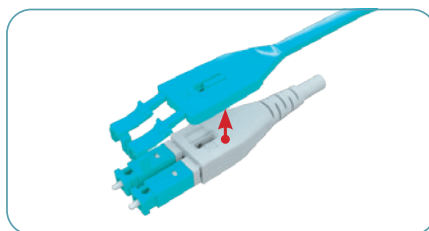
The Fibre Systems LC high-density switchable polarity connector features a distinctive design that maximizes panel density without sacrificing accessibility. Thanks to its flexible push-and-pull tab, connecting or disconnecting is straightforward. The connector also offers an easy-to-use mechanism for switching polarity during installation, making it cost-effective for critical situations.

Its unique uniboot design supports both 2mm and 3mm jacketed cables, helping to reduce cable clutter and simplify cable management in today's densely packed environments.

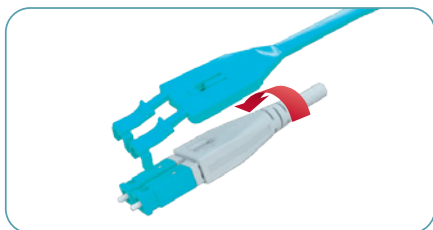
### Click & Flip polarity change process



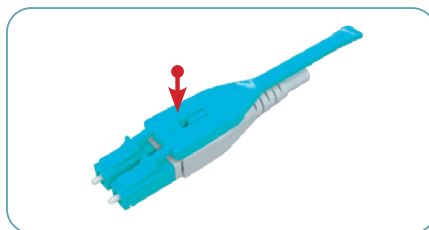
**Step 1:** CLICK to unlock bottom latch with finger



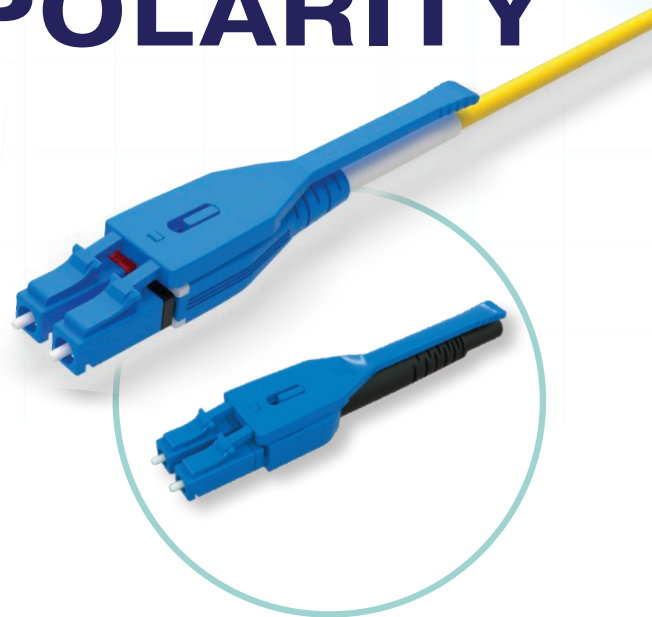
**Step 2:** Extract the latch from Uniboot



**Step 3:** FLIP the connector body 180°



**Step 4:** Push the latch back in until CLICK locks it in



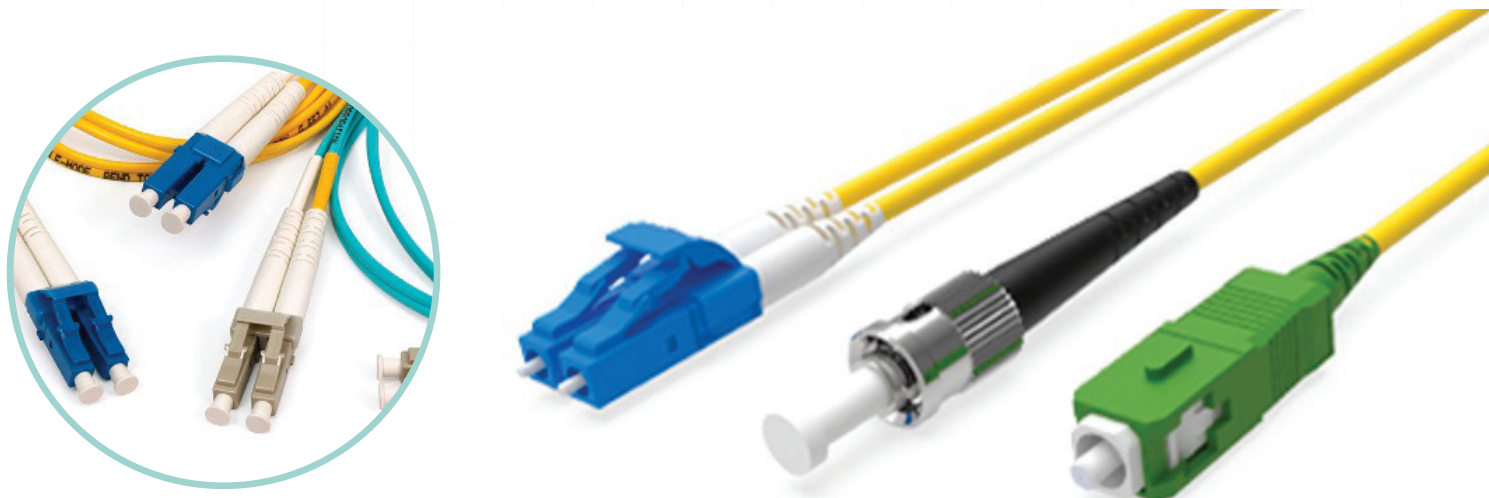
Also available in the durable 5mm model

### FEATURES

- Improved design for quicker and easier extraction
- Click and flip polarity change requires no jig/tools
- Eliminates fibre exposure during polarity change process
- IEC-61754-20
- Fibre Type: SM (9/125), MM (50/125, 62.5/125)
- Application Mode: SM, MM, APC
- Insertion Loss: 0.3dB or lower
- Return Loss: 55dB or more UPC, 65dB or more APC

## FIBRE OPTIC PATCH CORDS

# STANDARD PATCH CORDS



### Ordering Information

SX : Simplex  
DX : Duplex  
UR : Round

**Cord diameter**  
2 : 2mm  
3 : 3mm

**Pack size**  
XX : Blank for single  
06 : 6 pack  
12 : 12 pack

**Length**

**PC-DX-LCLC02-S2-2YE-06**

**Connector end A and B**

E2 : E2000 PC	LCH : LC DUPLEX HD
E2A : E2000/APC	SC : SC/UPC
MU : MU	SCA : SC/APC
ESC : ESCON	ST : ST/UPC
DIN : DIN/PC	FC : FC/UPC
LC : LC/UPC	FCA - FC/APC
LCA : LC/APC	

**Fibre mode**

M1 : OM1  
M4 : OM4  
S1 : OS1 G657D  
S2 : OS2 G657A2

**Colour**

YE : Yellow  
AQ : Aqua  
EV : Erica violet  
RE : Red  
SP : Salmon pink  
BK : Black  
BU : Blue

# FIBRE OPTIC PATCH CORDS

## Technical Specifications

### Connector Optical Specifications

CONNECTOR TYPES: LC, SC, ST, FC	UNITS	MM 850/1300NM				SM 1310/1550NM			
		Standard		Low Loss		UPC		APC	
		Typ	Max	Typ	Max	Typ	Max/Min	Typ	Max/Min
Max. Insertion Loss	dB	0.1	0.15	0.1	0.15	0.08	0.15	0.08	0.15
Min. Return Loss	dB	N/A				58	55	70	65

### Cable/Fibre Optical Specifications

FIBRE AND CABLE OPTICAL PARAMETERS			MULTIMODE			SINGLEMODE
	Condition	Units	OM1	OM3	OM4	OS1/OS2
Geometry	core/clad dia.	µm	62.5/125	50/125	50/125	9/125
Standard			TIA/EIA 492AAAA	ITU G651.1	ITU G651.1	ITU G657.A2
Attenuation	850/1300nm Typical	dB/km	3.0/1.0	3.0/1.0	3.0/1.0	0.36/0.22
	850/1300nm	Maxv dB/km	3.5/1.5	3.5/1.5	3.5/1.5	0.5/0.4
	1550nm	dB/km	–	–	–	0.25
Bandwidth (LED)	850nm	MHz.km	200	1500	3500	–
	1300nm	MHz.km	500	500	500	–
Bandwidth (Laser)	850nm	MHz.km	–	2000	4700	–
	1300nm	MHz.km	–	500	500	–
Min Bend Radius	mm		25	25	25	7.5

### Cable / Fibre Mechanical and Environmental Specifications

CABLE PARAMETERS	CONDITION/ UNIT	3MM		2MM	
		Simplex	Duplex	Simplex	Duplex Fig 8
Temperature °C	Operating			-40/+85	
	Storage			-55/+85	
	Installation			-10/+60	
Impact Resistance	Impacts	1000		750	200
Flex Resistance	Cycles	7500			
Crush Resistance	N/100mm <sup>2</sup>	500	1000	500	1000
Flame Retardancy		IEC 60332-1	IEC 60332-3	IEC 1034 1/2	IEC 60754-1/2
Diameter	mm	3	2.8*5.7	2	2.0 x 4.1
Weight	kg/km	6.8	13.2	3.5	8.2
Tensile Load	Short Term N	150	300	100	200
	Long Term N	80	200	60	100

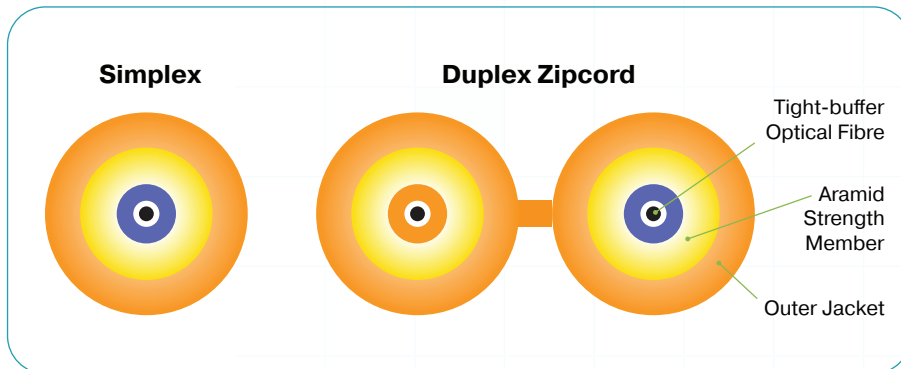


CONTACT: Call: +61 2 8553 0600 Email: sales@fibresystems.com.au [www.fibresystems.com.au](http://www.fibresystems.com.au)

Fibre Systems is an Australian-owned provider of ruggedised, high-performance fibre optic cable systems.  
© 2025, Fibre Systems, all rights reserved. Specifications are subject to change without notice.

# FIBRE OPTIC PATCH CORDS

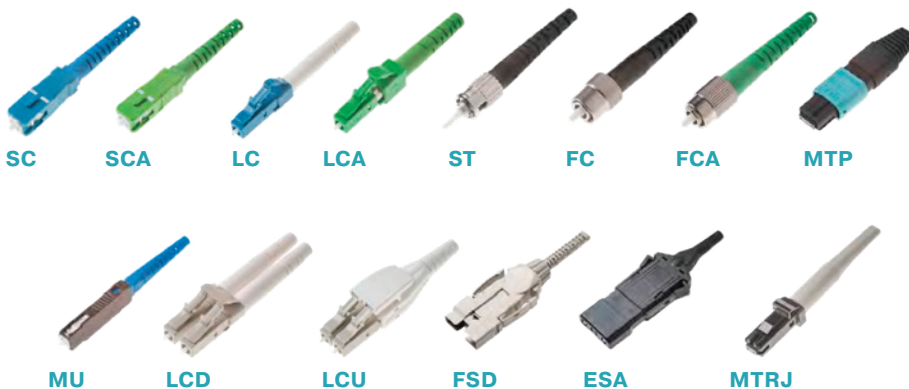
## Cable Construction



## Fibre Connector Types

Typical fibre connector interfaces are LC, SC, and ST in either multi-mode or singlemode applications. The matrix (above) refers to those commonly used in Australia market, with custom lengths, colours and types available on request.

Fibre Systems advanced fibre facility offers a full capability for harsh environment, military, tactical field, industrial, mining and broadcast fibre leads and assemblies.



## Sustainability Mission

At Fibre Systems, we strive to improve our design, manufacturing, and environmental practices. Our products and packaging are developed with sustainability in mind to reduce our carbon footprint.

All Fibre Systems patch cords meet the following standards:

- GR-409-Core
- ICEA-S-83-596
- TIA-568
- TIA-598
- IEC61300-3-4
- IEC613000-3-6
- GR-326-Core
- IEC617753-1
- ANSI/TIA-568.3-D-2016
- S008 Compliant
- IEC 60331-1
- RoHS, REACH and SvHC compliant
- Materials conflict compliant

## ISO 9001:2015

All Fibre Systems and technology partner processes are ISO 9001 certified, utilising advanced test and measurement technologies such as interferometric connector end face analysis and return loss testing, all compliant with and traceable to international standards. Fibre Systems cable assemblies are machine polished with premium components, ensuring consistently high-quality, durable terminations that surpass performance requirements.



## CONTACT:

Unit 4 / 277 Lane Cove Road, Macquarie Park, NSW 2113  
Call: +61 2 8553 0600 Email: sales@fibresystems.com.au  
[www.fibresystems.com.au](http://www.fibresystems.com.au)

004 Revision 02, 12.25



Fibre Systems is an Australian-owned provider of ruggedised, high-performance fibre optic cable systems.  
© 2025, Fibre Systems, all rights reserved. Specifications are subject to change without notice.